

DESCRIPTION

A pre-aligned tungsten-halogen lamp exclusively for user replacement of the lamp in the Thermo GENESYS 30 Spectrophotometer (G30).

APPLICATION(S)

For use only with the GENESYS 30 Spectrophotometer, GEX Part# P4400.

SPECIFICATIONS

Physical Specifications:

Product Dimensions	Packaging Dimensions	Product Weight
14cm (L) x 8.3cm (W) x 7cm (H)	17.2cm x 13.3cm x 8.3cm (6.75" x 5.25" x 3.25")	0.27 kg (0.60 lb.)

Material	Aluminum and plastic
Color	Grey
Packaging	Cardboard box with foam insert.

Storage:

Tungsten-halogen lamps should be stored at moderate temperature (10-30°C) and humidity (10-90% RH). Avoid contact with moisture.

Shelf Life:

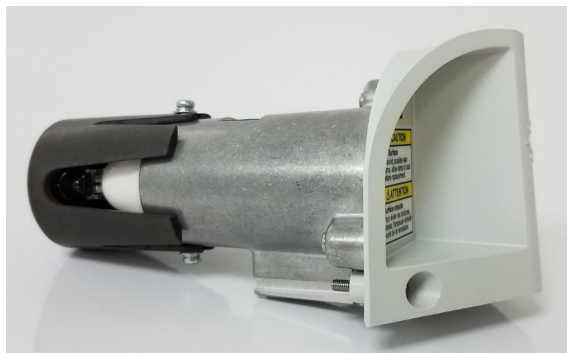
Tungsten-halogen lamps may be stored indefinitely under the recommended storage conditions.

Lamp Life:

The lamps are rated to provide 1000 hours but may exceed that amount. There may be no initial indication of lamp failure and they often fail catastrophically. Therefore, the user is encouraged to proactively replace the lamp as part of a preventative maintenance for the GENESYS 30 spectrophotometer to avoid increased risk of lamp failure during the dosimeter measurement process.

The user can view the accumulated hours for the lamp via the LCD display on the GENESYS 30. Refer to *GEX Doc# 100-167, GENESYS 30 Spectrophotometer – Product Specifications and Usage* for details.

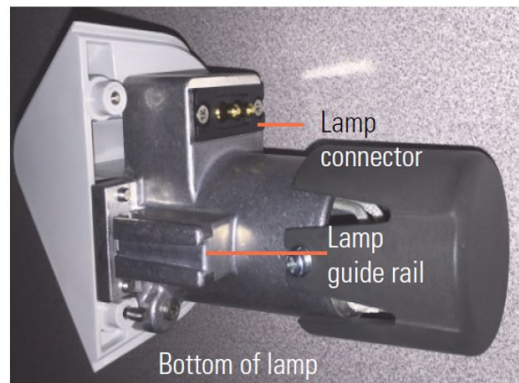
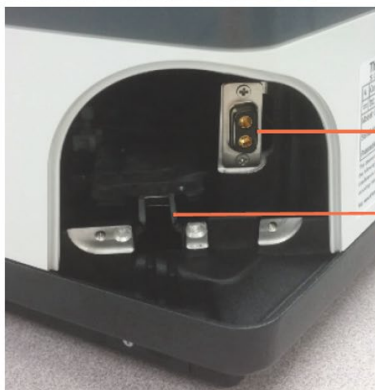
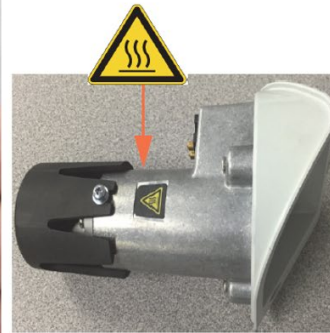
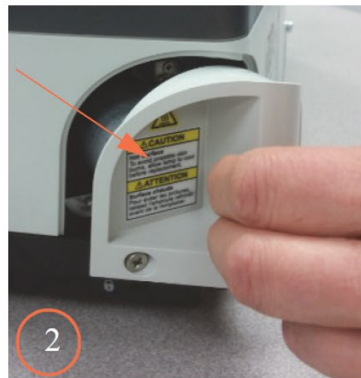
PRODUCT PHOTOS



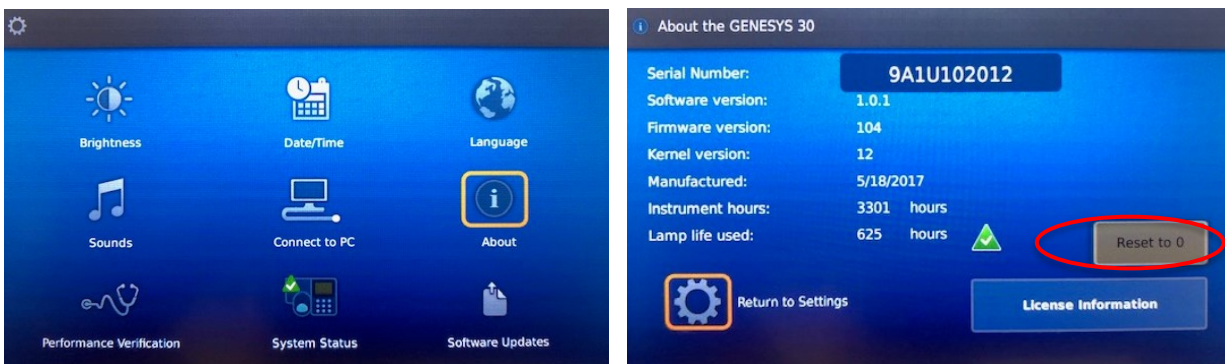
USAGE

Lamp Replacement Procedure:

- 1) If the existing lamp is still working before the replacement, execute *GEX Doc# 100-270, GENESYS 30 Performance Verification Procedure* before lamp replacement, to bracket all previous measurements since the last performance verification, and before the system is changed due to the pending lamp replacement.
- 2) Remove the original lamp and housing by loosening the Phillips head screws. Slide the current lamp assembly out of position. Mark the old lamp assembly so you know which is the old versus which is new. The screws are not reused. The replacement lamp comes with a new set of Phillips screws.
- 3) Insert the new lamp by sliding on the guide system until the connections are made. Tighten the screws.
- 4) Refer to the instructional images below:



- 5) Power on the instrument and go to “Settings -> About”. Press the reset button for the lamp hours. Refer to the images below.
- 6) Leave the instrument on for 24 hours to allow the lamp to stabilize and burn off any contaminants on the filaments.
- 7) If there are any instrument errors after changing the lamp, review the *Thermo Scientific GENESYS 30 User Guide* for troubleshooting.
- 8) Execute complete performance verification of the instrument. Execute *GEX Doc# 100-270, GENESYS 30 Performance Verification Procedure*.
 - a. If the performance verification passes successfully, return the instrument into service.
 - b. If the performance verification fails, remove the lamp and repeat all steps above. For repeated failure, contact GEX Customer Service or Thermo Scientific or their local dealer.



PRECAUTIONS

Precautions:

- Avoid direct skin contact with lamp inside the alignment housing.

WARRANTY

90-day warranty from Thermo Fisher Scientific.

RELATED DOCUMENTS

- Thermo Scientific GENESYS 30 User Guide
- GEX Doc# 100-167, GENESYS 30 Spectrophotometer - Product Specifications and Usage (PSU)
- GEX Doc# 100-270, GENESYS 30 Performance Verification Procedure

REVISION HISTORY

DATE	CHANGE DESCRIPTION	REVISION
09/18/18	Initial release.	A
10/03/18	Added 'lamp hours' in the usage section. ECO 70403.	B
05/23/19	Added instruction for P.V. related to lamp change in Usage section. Reformatted. ECO 70444.	C